

Ai-Menu

Pairing and Transaction User Guide

Updated on, by: 04/02/2025 HMS

Reviewed on, by: 05/02/2025 TB

mx51



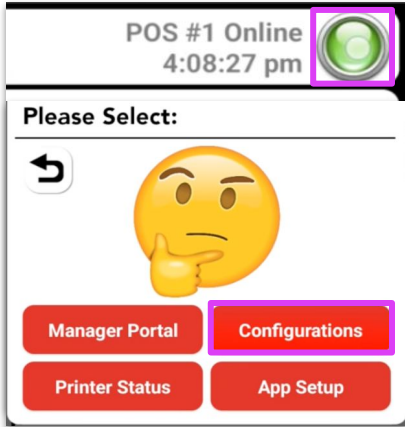
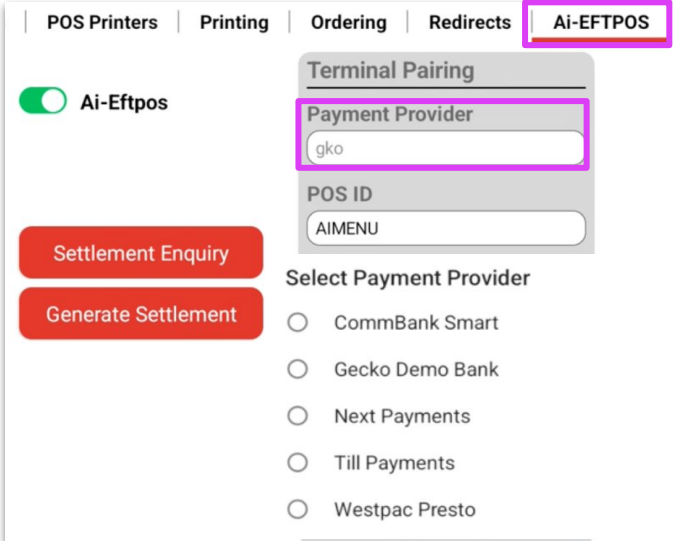
Table of Contents

- System Requirements
- Pairing the Point-of-Sale (POS) to the EFTPOS Terminal
- Perform a test Purchase Transaction
- Perform a test Refund Transaction

System Requirements

Systems	Requirements
Connectivity	Both the Point-of-sale (POS) system and EFTPOS Terminal need to be connected to the same Local Area Network
POS Version	1.11 and above
POS Operating System	Windows 10 and above
Integration Type	SPI

Pairing the POS to the EFTPOS Terminal - (1 of 4)

Steps	Example Screens
<ol style="list-style-type: none">1. Tap green lamp (top right corner)2. Select Configurations3. Select Ai-EFTPOS4. Enter Payment Provider	 

Pairing the POS to the EFTPOS Terminal - (2 of 4)

Steps

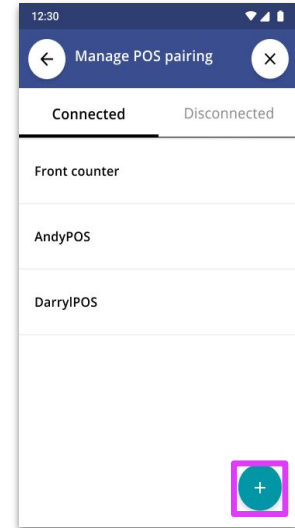
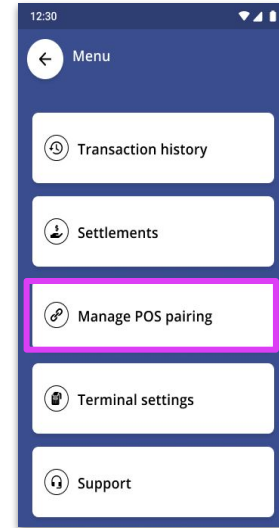
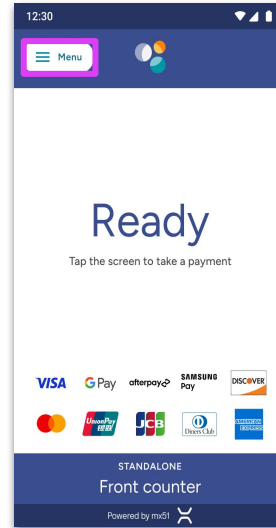
5. On the EFTPOS terminal, Select Menu

Note: If there is no existing pairing, the "Manage POS pairing" button will show

6. Select Manage POS pairing

7. Select +

Example Screens



EFTPOS Terminal screens

Pairing the POS to the EFTPOS Terminal - (3 of 4)

Steps

8. In **Ai-Menu**:
 - o Enter the **POS ID**, the **EFTPOS S/N** and the **EFTPOS Address** that is shown on the EFTPOS terminal
 - o Click on **Pair**
 - o Once complete, click **Save**

Example Screens

The screenshot displays the 'Ai-EFTPOS' configuration interface. At the top, there are navigation tabs: 'POS Printers', 'Printing', 'Ordering', 'Redirects', and 'Ai-EFTPOS'. Below the tabs, there is a toggle switch for 'Ai-Eftpos' which is turned on. To the left of the main form are two red buttons: 'Settlement Enquiry' and 'Generate Settlement'. The main form is titled 'Terminal Pairing' and contains the following fields:

- Payment Provider:** gko
- POS ID:** AIMENU
- EFTPOS Serial No.:** 987-654-321
- EFTPOS Address:** 192.168.8.177

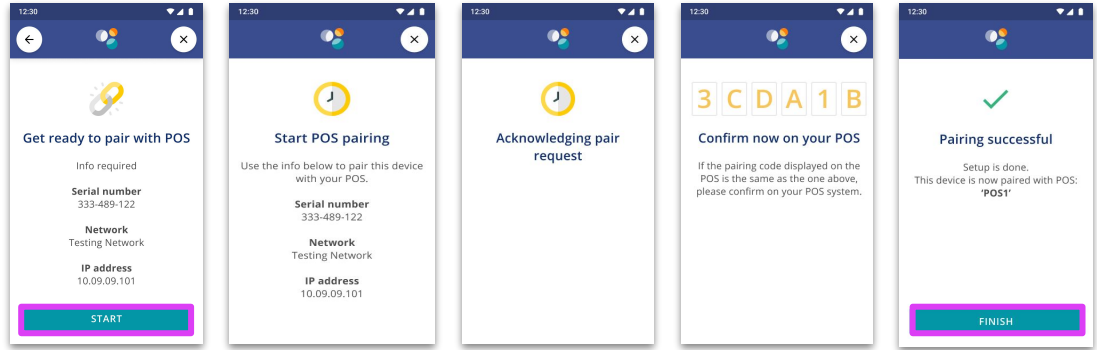
The status is indicated as 'UNPAIRED' in red text. At the bottom of the form, there is a checkbox for 'Test' and a red 'pair' button. A red rectangular box highlights the 'POS ID', 'EFTPOS Serial No.', and 'EFTPOS Address' fields.

Pairing the POS to the EFTPOS Terminal - (4 of 4)

Steps

9. On the **EFTPOS Terminal**:
 - Select **START**
 - Ensure the code displayed matches what is displayed on POS and select **YES**
 - Select **FINISH**

Example Screens



EFTPOS Terminal screens

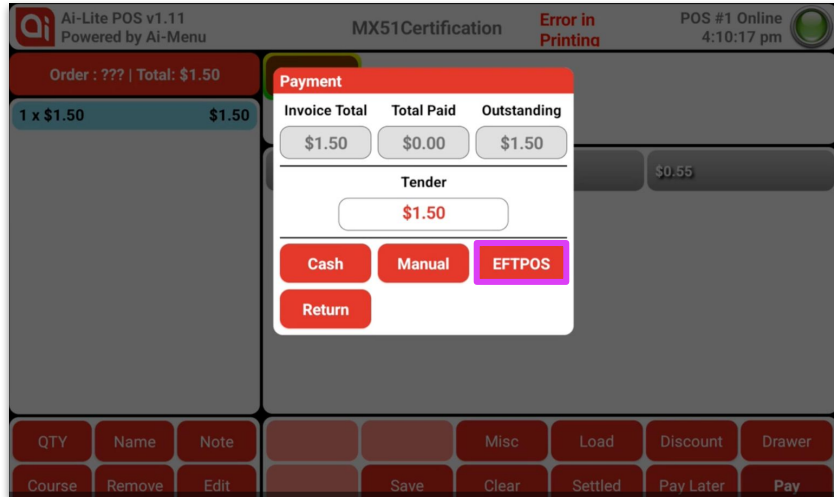
Perform a Test Purchase Transaction - (1 of 2)

Steps

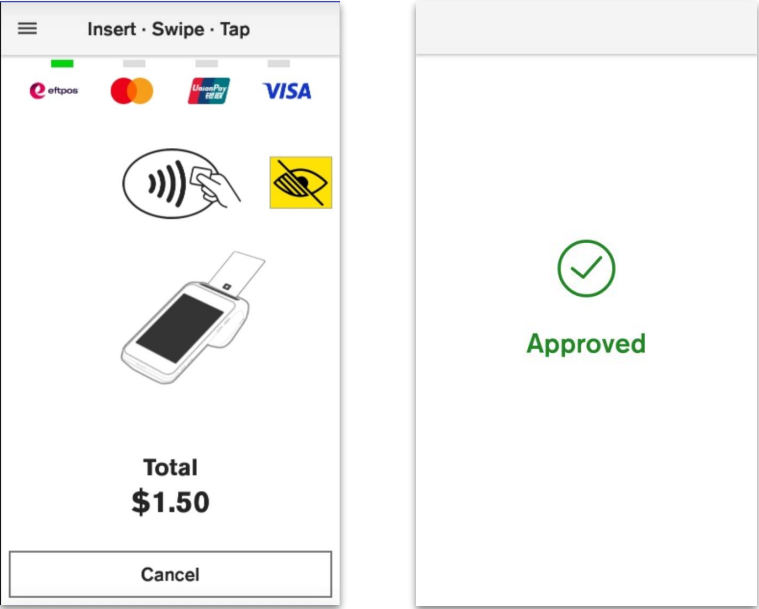
To perform a test [Purchase Transaction](#) to ensure that the integrated solution is working:

1. Select the [Product](#)
2. Select [Pay](#)
3. Select [Eftpos](#)

Example Screens



Perform a Test Purchase Transaction - (2 of 2)

Steps	Example Screens
<p>4. The transaction will be sent to the eftpos terminal for payment.</p>	 <p><i>EFTPOS Terminal screens</i></p>

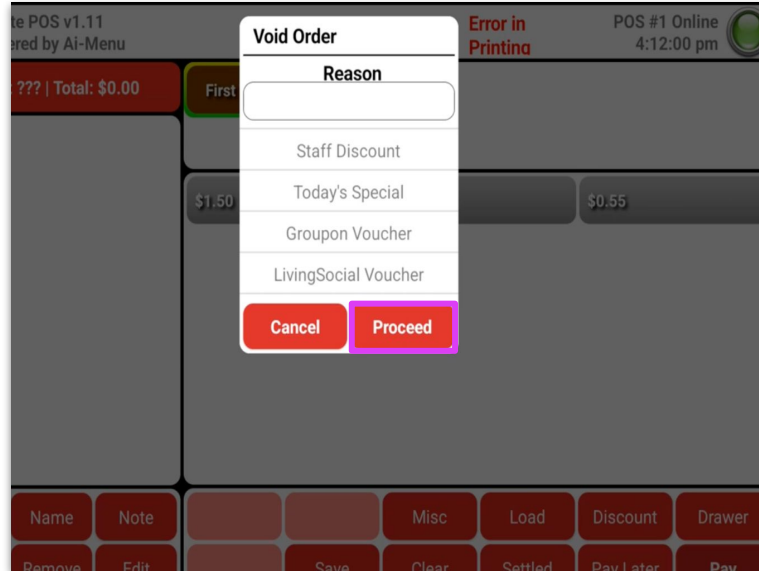
Perform a Test Refund Transaction - (1 of 2)

Steps

To **Refund** the test purchase transaction:

1. Select **Settled** and select the purchase to be refunded followed by **Void**
2. Select the **Reason** from the listed options followed by **Proceed**

Example Screens

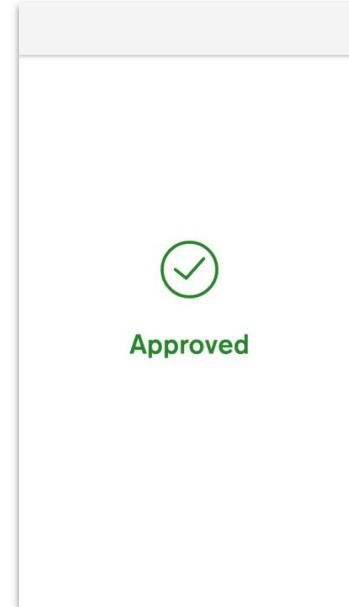


Perform a Test Refund Transaction - (2 of 2)

Steps

3. The transaction will be sent to the eftpos terminal for payment.
4. On the eftpos terminal, enter the [manager passcode](#)

Example Screens



EFTPOS Terminal screens