

Seams Systems

Pairing and Transaction User Guide

Updated on, by: 31/01/2025 MHB

Reviewed on, by: 05/02/2025 TB

mx51



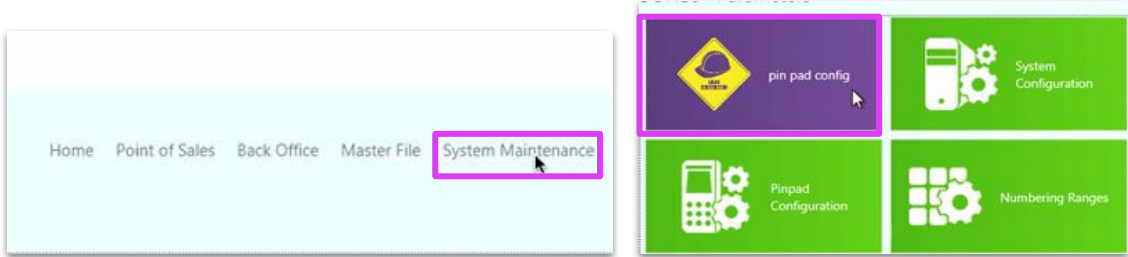
Table of Contents

- System Requirements
- Pairing the Point-of-Sale (POS) to the EFTPOS Terminal
- Perform a test Purchase Transaction


System Requirements

Systems	Requirements
Connectivity	Both the Point-of-sale (POS) system and EFTPOS Terminal need to be connected to the same Local Area Network
POS Version	1.2.5.0 and above
POS Operating System	Windows 10 and above
Integration Type	SPI

Pairing the POS to the EFTPOS Terminal - (1 of 4)

Steps	Example Screens
<ol style="list-style-type: none">1. Login to Seams Systems and select System Maintenance2. Select pin pad config	 <p>The screenshot displays the Seams Systems web interface. At the top, a navigation menu includes 'Home', 'Point of Sales', 'Back Office', 'Master File', and 'System Maintenance'. The 'System Maintenance' link is highlighted with a red box. Below the navigation menu, a grid of four configuration options is shown: 'pin pad config' (highlighted with a red box), 'System Configuration', 'Pinpad Configuration', and 'Numbering Ranges'.</p>

Pairing the POS to the EFTPOS Terminal - (2 of 4)

Steps	Example Screens
<p>3. Enter in a valid POS ID and EFTPOS Address</p> <p>4. Select Save</p> <p>5. Select Pair</p>	 <p>POS ID: TEST</p> <p>EFTPOS ADDRESS: 10.20.15.60</p>  <p>Save</p>  <p>STATUS: UNPAIRED</p> <p>PAIR</p>

Pairing the POS to the EFTPOS Terminal - (3 of 4)

Steps

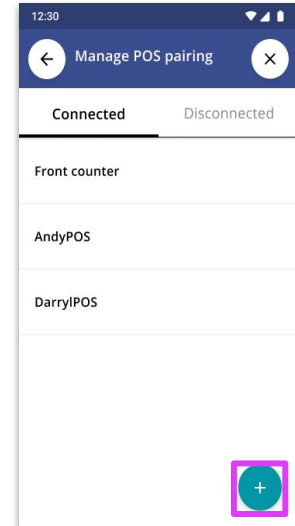
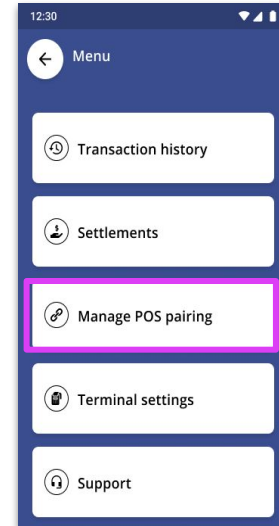
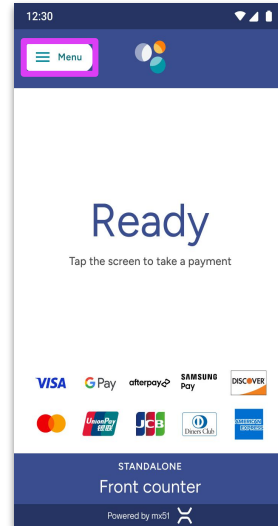
6. On the EFTPOS terminal, Select **Menu**

Note: If there is no existing pairing, the "Manage POS pairing" button will show

7. Select **Manage POS pairing**

8. Select **+**

Example Screens



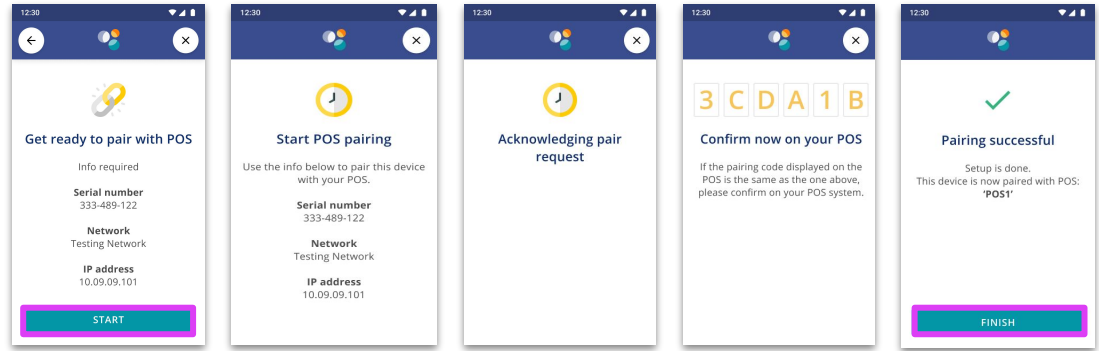
EFTPOS Terminal screens

Pairing the POS to the EFTPOS Terminal - (4 of 4)

Steps

9. On the **EFTPOS Terminal**:
 - Select **START**
 - Ensure the code displayed matches what is displayed on POS and select **YES**
 - Select **FINISH**

Example Screens



EFTPOS Terminal screens

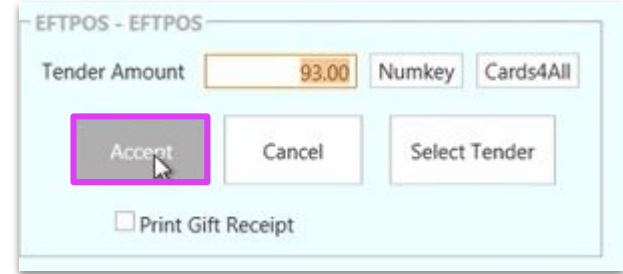
Perform a Test Purchase Transaction - (1 of 2)

Steps

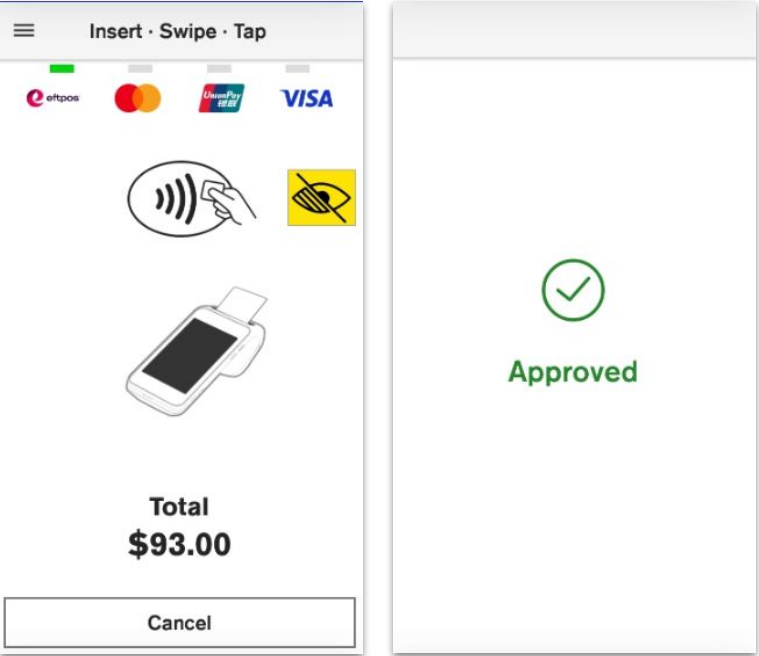
To perform a test [Purchase Transaction](#) to ensure that the integrated solution is working:

1. Select the item and select [EFTPOS](#)
2. Select [Accept](#)
3. Complete Payment on EFTPOS terminal

Example Screens



Perform a Test Purchase Transaction - (2 of 2)

Steps	Example Screens
4. Complete Payment on EFTPOS terminal	 <p>The image displays two example screens from an EFTPOS terminal. The left screen shows the payment interface with logos for eftpos, Mastercard, UnionPay, and VISA. It features a tap icon, a card icon, and a total amount of \$93.00. A 'Cancel' button is visible at the bottom. The right screen shows a green checkmark and the word 'Approved', indicating a successful transaction.</p>