

Qonus (Android)

Pairing and Transaction User Guide

Updated on, by: 03/02/2025 MHB

Reviewed on, by: 05/02/2025 TB

mx51



Table of Contents

- System Requirements
- Pairing the Point-of-Sale (POS) to the EFTPOS Terminal
- Perform a test Purchase Transaction
- Perform a test Refund Transaction

System Requirements

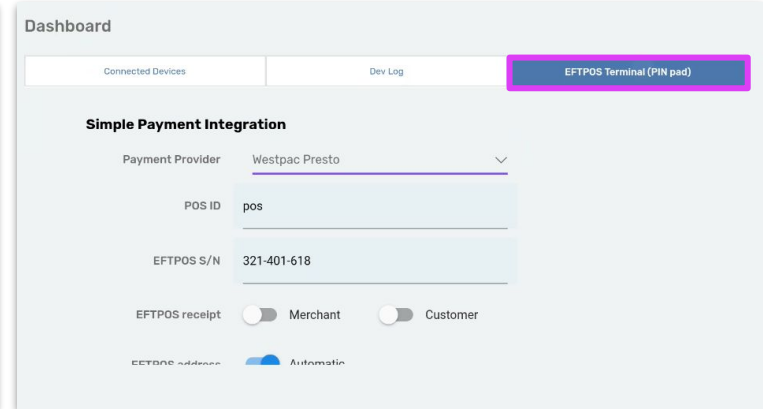
Systems	Requirements
Connectivity	Both the Point-of-sale (POS) system and EFTPOS Terminal need to be connected to the same Local Area Network
POS Version	5.5.6 and above
POS Operating System	Windows 10 and above
Integration Type	SPI

Pairing the POS to the EFTPOS Terminal - (1 of 5)

Steps

1. Login to the POS and select the [Dashboard icon](#)
2. Select the [EFTPOS Terminal \(Pin-Pad\)](#) option

Example Screens



Pairing the POS to the EFTPOS Terminal - (2 of 5)

Steps

3. Select the [Payment Provider](#)
4. Enter the [POS ID](#)
5. Enter the [Serial Number](#)
6. Toggle "[Automatic](#)" for the EFTPOS address and select [Save](#)

Example Screens

The screenshot displays a configuration interface for an EFTPOS terminal. The fields and controls are as follows:

- POS ID:** A text input field containing the value "pos".
- EFTPOS S/N:** A text input field containing the value "321-401-618".
- EFTPOS receipt:** A section with two toggle switches. The "Merchant" toggle is currently turned off (grey), and the "Customer" toggle is also turned off (grey).
- EFTPOS address:** A section with a toggle switch set to "Automatic" (blue).
- IP Address:** A text input field containing the value "192.168.1.100".
- Test mode:** A toggle switch set to "On" (blue).
- Save:** A green button located at the bottom right of the configuration area.

Pairing the POS to the EFTPOS Terminal - (3 of 5)

Steps

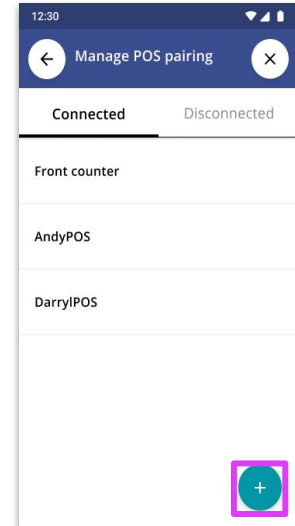
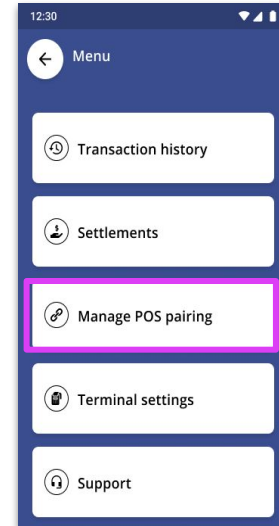
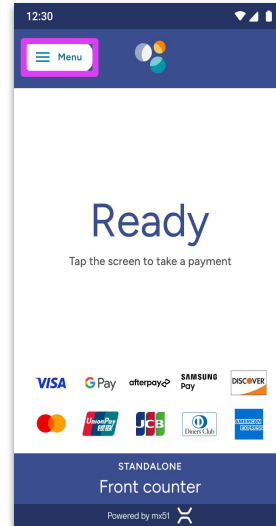
7. On the EFTPOS terminal, Select Menu

Note: If there is no existing pairing, the "Manage POS pairing" button will show

8. Select Manage POS pairing


9. Select +

Example Screens



EFTPOS Terminal screens

Pairing the POS to the EFTPOS Terminal - (4 of 5)

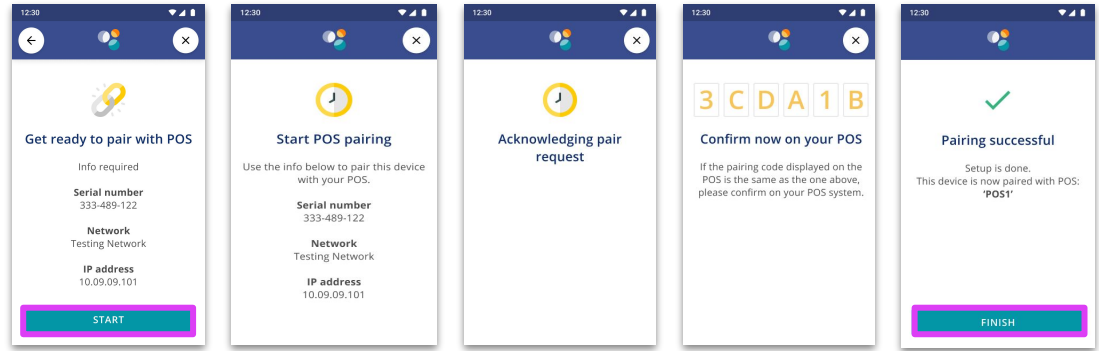
Steps	Example Screens
10. Select Pair	 <p>The screenshot shows a light gray rectangular box with a drop shadow. Inside the box, the text "Status" is on the left and "UNPAIRED" is on the right. Below this text is a teal rectangular button with the word "PAIR" in white capital letters. The button is highlighted with a thick purple border.</p>

Pairing the POS to the EFTPOS Terminal - (5 of 5)

Steps

11. On the **EFTPOS Terminal**:
 - Select **START**
 - Ensure the code displayed matches what is displayed on POS and select **YES**
 - Select **FINISH**

Example Screens



EFTPOS Terminal screens

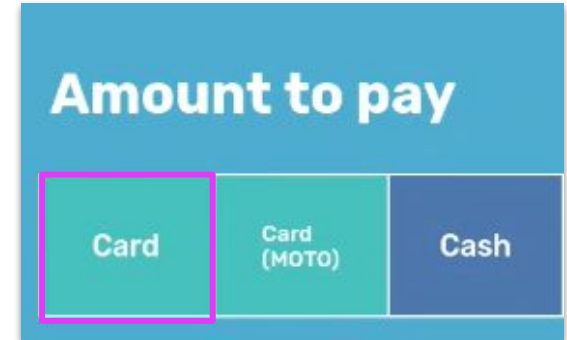
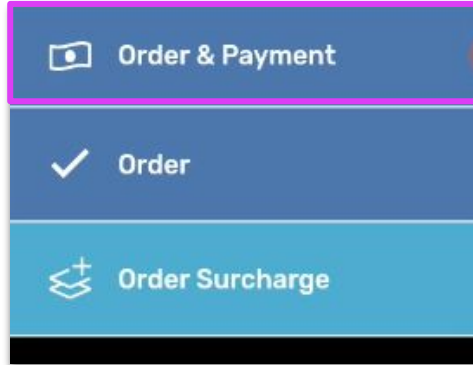
Perform a Test Purchase Transaction - (1 of 2)

Steps

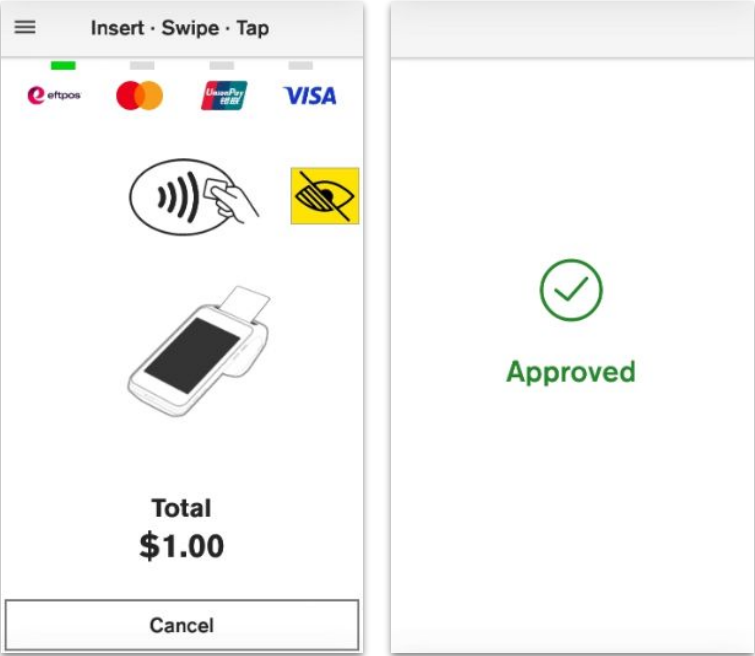
To perform a test [Purchase Transaction](#) to ensure that the integrated solution is working:

1. Select the product and select [Order & Payment](#)
2. Select [Card](#)

Example Screens



Perform a Test Purchase Transaction - (2 of 2)

Steps	Example Screens
3. Complete Payment on EFTPOS terminal	 <p>The image displays two example screens from an EFTPOS terminal. The left screen shows the payment interface with options for eftpos, Mastercard, UnionPay, and VISA. It features a hand tapping a card on a reader icon, a card reader icon, and a total amount of \$1.00. A 'Cancel' button is visible at the bottom. The right screen shows a green checkmark icon and the word 'Approved' in green text, indicating a successful transaction.</p>

Perform a Test Refund Transaction

Steps

To Refund the test purchase transaction:

1. Select **Completed**
2. Select the order and select **Refund All**
3. Complete transaction on EFTPOS terminal

Example Screens

