

Cobalt Retail

Pairing and Transaction User Guide

Updated on, by: 03/02/2025, HMS

Reviewed on, by: 05/02/2025, TB

mx51



Table of Contents

- System Requirements
- Pairing the Point-of-Sale (POS) to the EFTPOS Terminal
- Perform a test Purchase Transaction

System Requirements

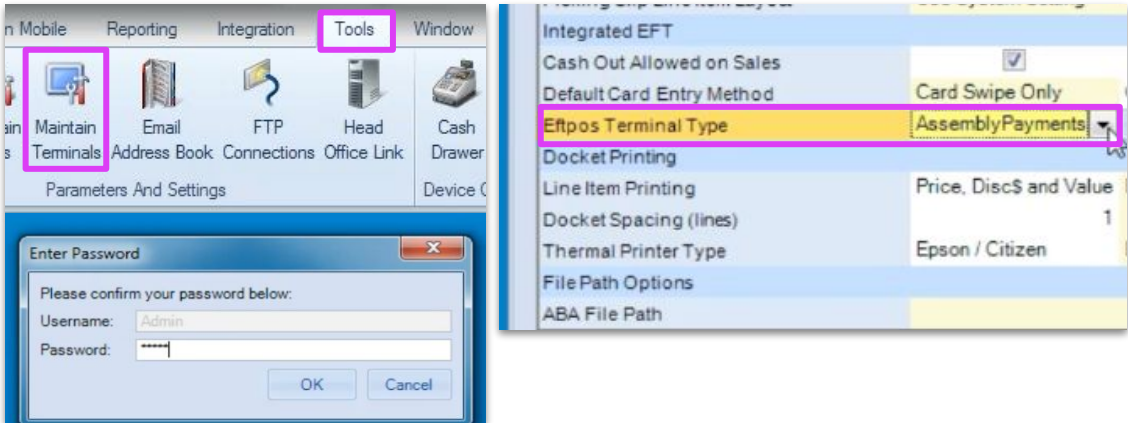
Systems	Requirements
Connectivity	Both the Point-of-sale (POS) system and EFTPOS Terminal need to be connected to the same Local Area Network
POS Version	4.23.1.10 and above
POS Operating System	Windows 10 and above
Integration Type	SPI.NET

Pairing the POS to the EFTPOS Terminal - (1 of 4)

Steps

Example Screens

- 1. From the Tools menu click on 'Maintain Terminals'
- 2. Enter the Admin password.
- 3. In the Administrator column select 'SPI Eftpos' from the drop down then click on the ... (dots)



Pairing the POS to the EFTPOS Terminal - (2 of 4)

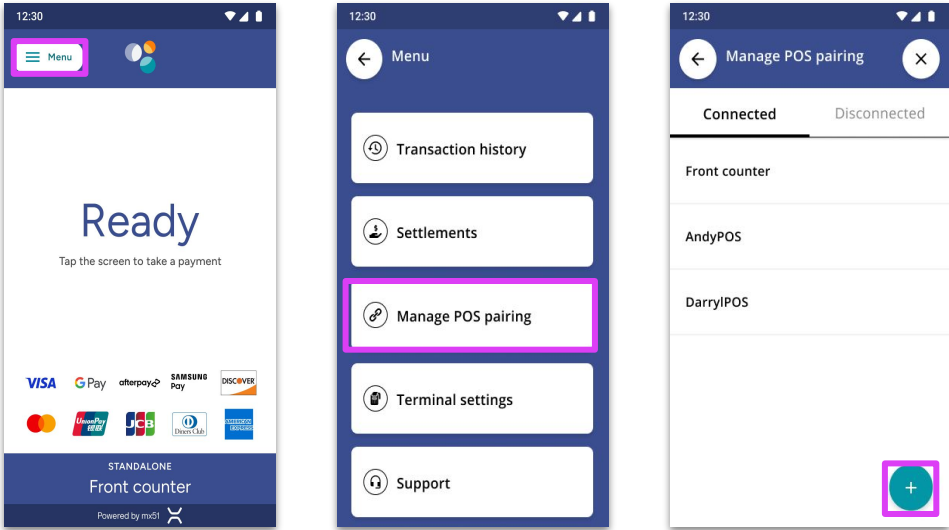
Steps	Example Screens
-------	-----------------

4. On the EFTPOS terminal, Select Menu

Note: If there is no existing pairing, the "Manage POS pairing" button will show

5. Select Manage POS pairing

6. Select +



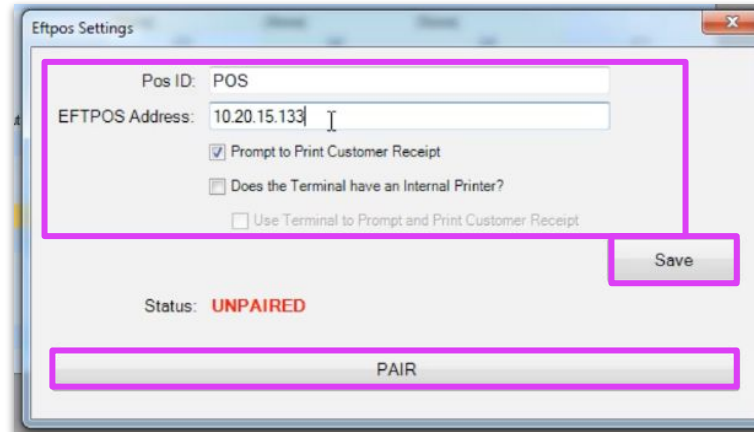
EFTPOS Terminal screens

Pairing the POS to the EFTPOS Terminal - (3 of 4)

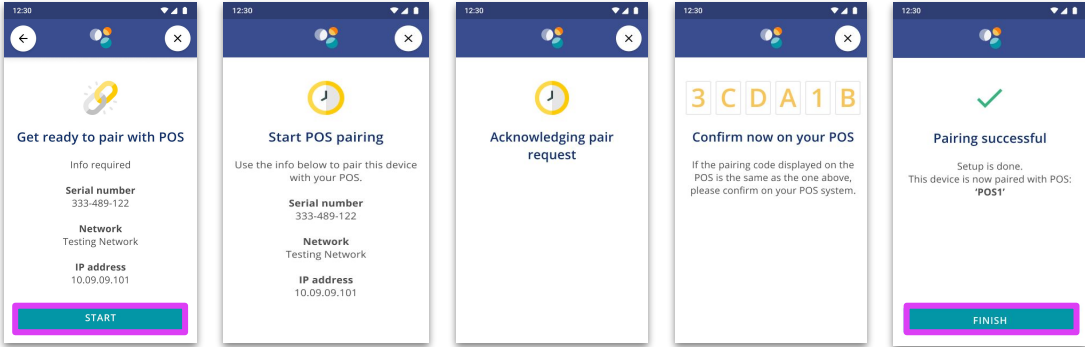
Steps

7. Enter the [POS ID](#) and the [EFTPOS Address](#) that is shown on the EFTPOS terminal
8. Optional Step. Select the '[Does the Terminal have an Internal Printer](#)' checkbox and then '[Use Terminal to Prompt and Print Customer Receipt](#)' in order to print from the terminal.
9. Click on [Save](#) and [Pair](#)

Example Screens



Pairing the POS to the EFTPOS Terminal - (4 of 4)

Steps	Example Screens
<p>10. On the EFTPOS Terminal:</p> <ul style="list-style-type: none">○ Select START○ Ensure the code displayed matches what is displayed on POS and select YES○ Select FINISH	 <p>The five screenshots show the following steps:</p> <ol style="list-style-type: none">Get ready to pair with POS: Displays required info: Serial number 333-489-122, Network Testing Network, IP address 10.09.09.101. A green START button is at the bottom.Start POS pairing: Instructs to use the info below to pair the device. Displays the same serial number, network, and IP address. A green clock icon is at the top.Acknowledging pair request: A green clock icon is at the top.Confirm now on your POS: Shows a 6-digit code 3 C D A 1 B. Text below says: 'If the pairing code displayed on the POS is the same as the one above, please confirm on your POS system.'Pairing successful: Shows a green checkmark. Text says: 'Setup is done. This device is now paired with POS: POS1'. A green FINISH button is at the bottom.

EFTPOS Terminal screens

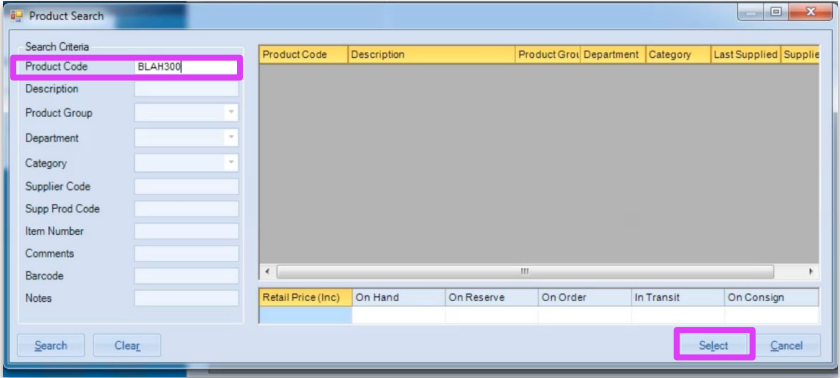
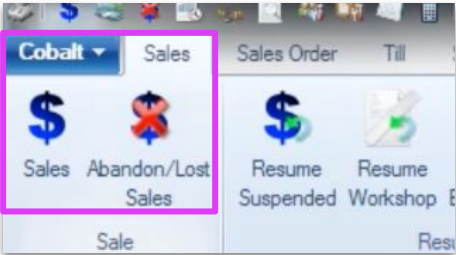
Perform a Test Purchase Transaction - (1 of 3)

Steps

To perform a test [Purchase Transaction](#) to ensure that the integrated solution is working:

- 1. From the Sales menu select [Sales](#)
- 2. Select [Search Product \(F9\)](#) and search by [Product Code](#).
- 3. Press [Search](#)

Example Screens



Perform a Test Purchase Transaction - (2 of 3)

Steps

To perform a test [Purchase Transaction](#) to ensure that the integrated solution is working:

- 4. Select [Tender \(F3\)](#)
- 5. Select [M-Manual EFT](#)
- 6. Press [OK](#)
- 7. The transaction will be sent to the eftpos terminal for payment.

Example Screens

Tendering: \$6.65

Description	Amount
Q - Cheque	0.00
C - Cash	0.00
E - EFTPOS	6.65
M - Manual EFT	0.00
V - Visa	0.00

☐ (+) Merchant Fee: \$0.00

Total \$6.65

Remaining: \$0.00

\$100 (F2)

\$50 (F3)

\$20 (F4)

\$10 (F5)

\$5 (F6)

\$2 (F7)

\$1 (F8)

50c (F9)

20c (F10)

10c (F11)

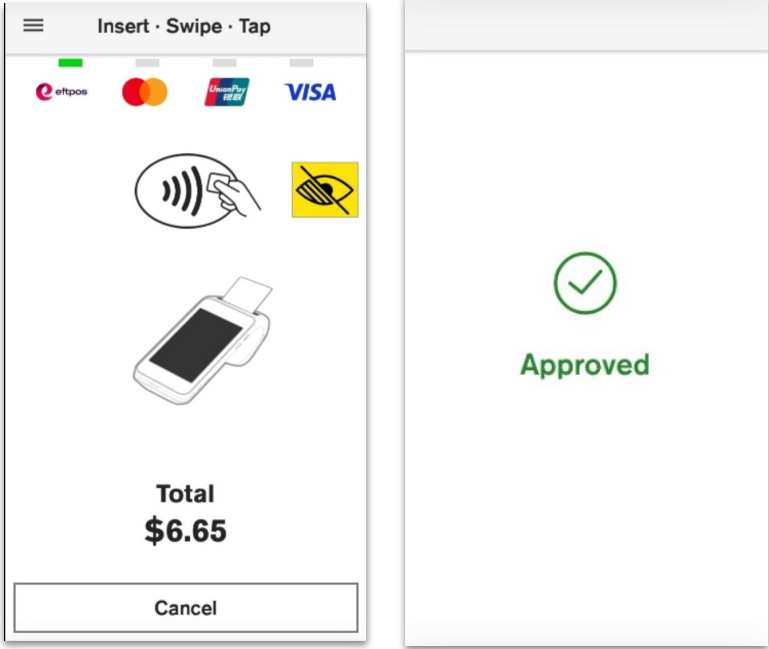
Ok

Cancel

EFT Card Source Card Swipe Only

Cash Out \$0.00

Perform a Test Purchase Transaction - (3 of 3)

Steps	Example Screens
<p>8. Complete Payment on EFTPOS terminal</p>	 <p>The image displays two example screens from an EFTPOS terminal. The left screen shows the payment interface with logos for eftpos, Mastercard, UnionPay, and VISA. It includes a contactless payment icon (a hand holding a card over a terminal) and a yellow icon with a crossed-out eye. Below these is an illustration of a smartphone being used for payment. The total amount is displayed as \$6.65, and there is a 'Cancel' button at the bottom. The right screen shows a green checkmark inside a circle, indicating that the payment is 'Approved'.</p>