

SPI POS

# Pairing and Transaction User Guide

Updated on, by: 17/01/2025

Reviewed on, by:  
21/01/2025, TB  
24/01/25, TB

mx51



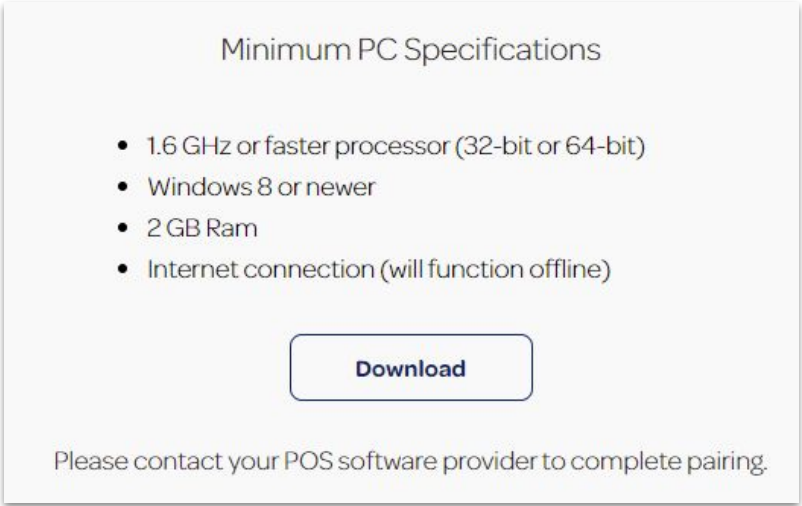
# Table of Contents

- System Requirements
- Pairing the Point-of-Sale (POS) to the EFTPOS Terminal
- Perform a test Purchase Transaction
- Perform a test Refund Transaction

# System Requirements

Systems	Requirements
Connectivity	Both the Point-of-sale (POS) system and EFTPOS Terminal need to be connected to the <a href="#">same Local Area Network</a>
POS Version	<a href="#">3.12.3.7 and above</a>
POS Operating System	<a href="#">Windows 10 and above</a>
Integration Type	SPI

# Pairing the POS to the EFTPOS Terminal - *Setting up Spice* (1 of 6)

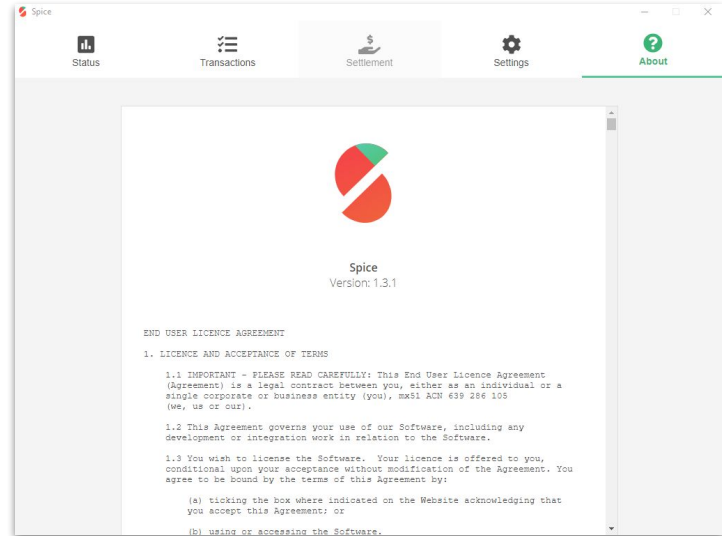
Steps	Example Screens
<ol style="list-style-type: none"><li data-bbox="112 248 703 390">1. Download <a href="https://spice.integration.mspenv.io/latest.exe">Spice</a>  <a href="https://spice.integration.mspenv.io/latest.exe">https://spice.integration.mspenv.io/latest.exe</a>  <i>* Please see your POS provider for enabling Spice integration within the POS. Set up will vary depending on the POS provider.</i></li><li data-bbox="112 549 703 647">2. Spice will begin downloading. Once complete, select open in your toolbar or go to your PC downloads folder.</li><li data-bbox="112 696 703 794">3. When the program is run, there is no visible installation process and Spice should appear within a few seconds.</li></ol>	 <p>Minimum PC Specifications</p> <ul style="list-style-type: none"><li>• 1.6 GHz or faster processor (32-bit or 64-bit)</li><li>• Windows 8 or newer</li><li>• 2 GB Ram</li><li>• Internet connection (will function offline)</li></ul> <p><b>Download</b></p> <p>Please contact your POS software provider to complete pairing.</p>

# Pairing the POS to the EFTPOS Terminal - *Setting up Spice* (2 of 6)

## Steps

4. You will be automatically directed to the about tab (end user licence agreement).

## Example Screens



# Pairing the POS to the EFTPOS Terminal - *Setting up Spice* (3 of 6)

## Steps

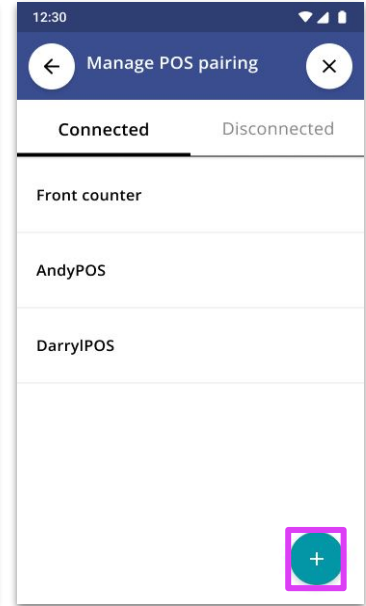
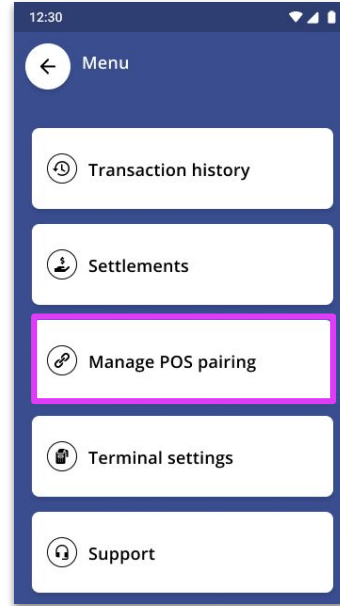
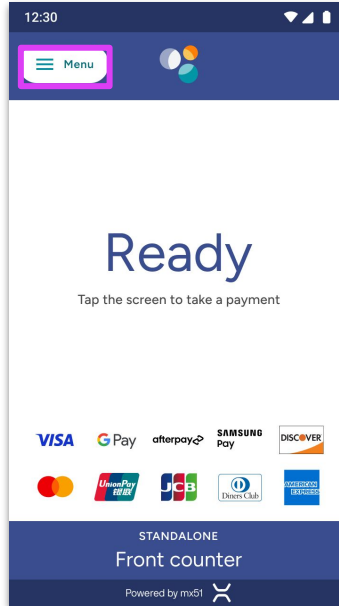
5. On the EFTPOS terminal, Select **Menu**

*Note: If there is no existing pairing, the "Manage POS pairing" button will show*

6. Select **Manage POS pairing**

7. Select **+**

## Example Screens

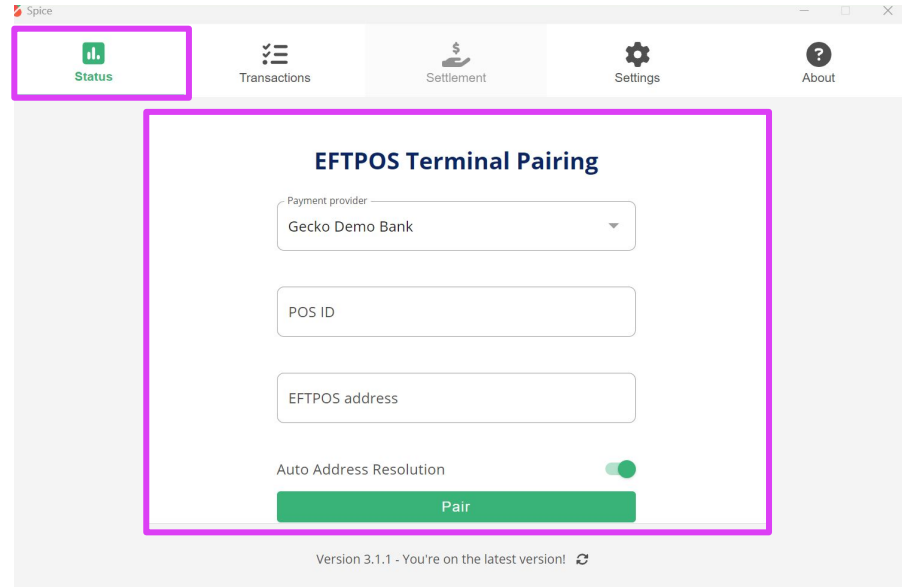


# Pairing the POS to the EFTPOS Terminal - *Setting up Spice* (4 of 6)

## Steps

8. Go to the [Status](#) tab on Spice.
9. On [Spice](#), select your [payment provider](#), enter the details of the EFTPOS terminal and [enable Auto Address resolution](#).

## Example Screens



The screenshot displays the Spice application interface. The top navigation bar includes the 'Status' tab (highlighted with a red box), 'Transactions', 'Settlement', 'Settings', and 'About'. The main content area is titled 'EFTPOS Terminal Pairing' and contains the following fields and controls:

- Payment provider:** A dropdown menu with 'Gecko Demo Bank' selected.
- POS ID:** A text input field.
- EFTPOS address:** A text input field.
- Auto Address Resolution:** A toggle switch that is currently turned on (green).
- Pair:** A green button to initiate the pairing process.

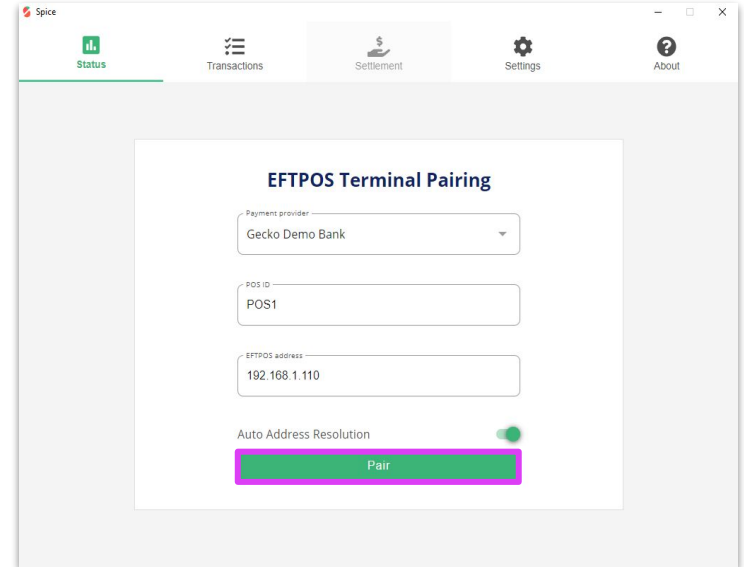
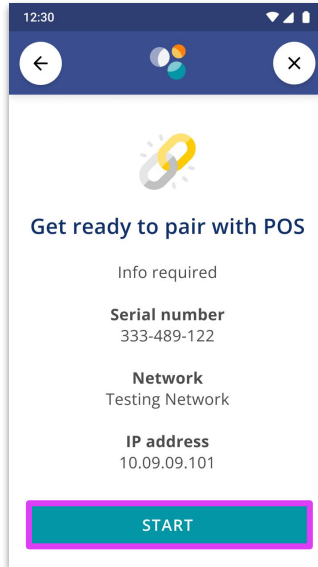
At the bottom of the screen, a version notice reads: 'Version 3.1.1 - You're on the latest version!' with a refresh icon.

# Pairing the POS to the EFTPOS Terminal - *Setting up Spice* (5 of 6)

## Steps

10. Select **START** on the EFTPOS terminal and **PAIR** on Spice.

## Example Screens

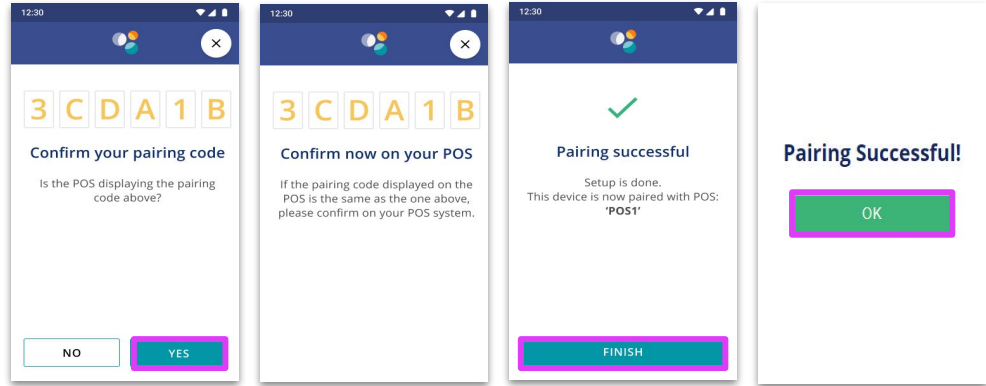


# Pairing the POS to the EFTPOS Terminal - *Setting up Spice* (6 of 6)

## Steps

11. Ensure the code displayed matches what is displayed on Spice and select **YES** on the EFTPOS terminal.
12. Select **FINISH** on the EFTPOS terminal.
13. Select **OK** on Spice.

## Example Screens



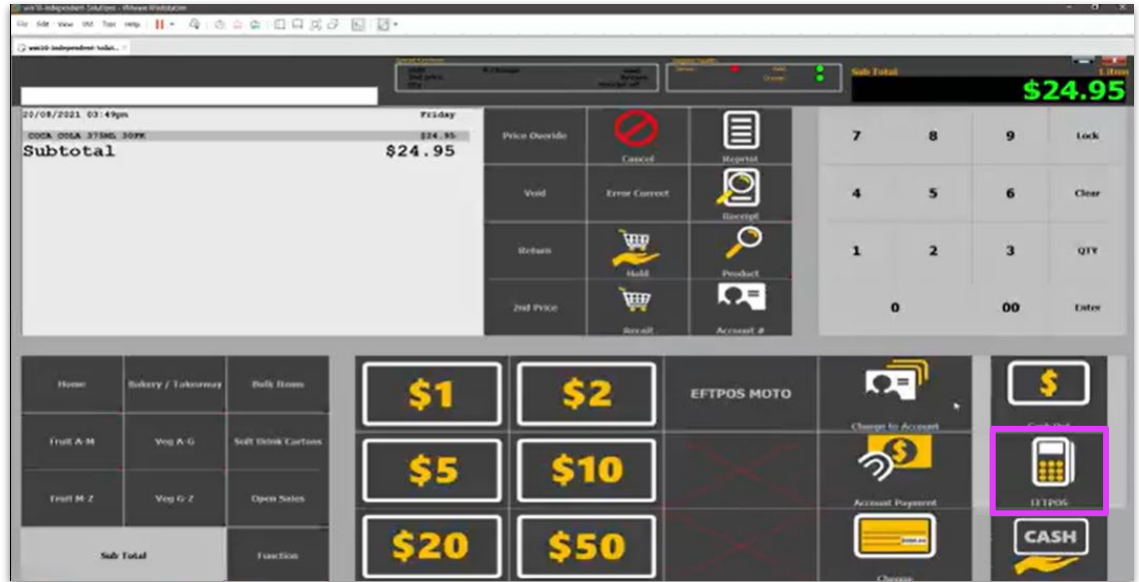
# Perform a Test Purchase Transaction - (1 of 2)

## Steps

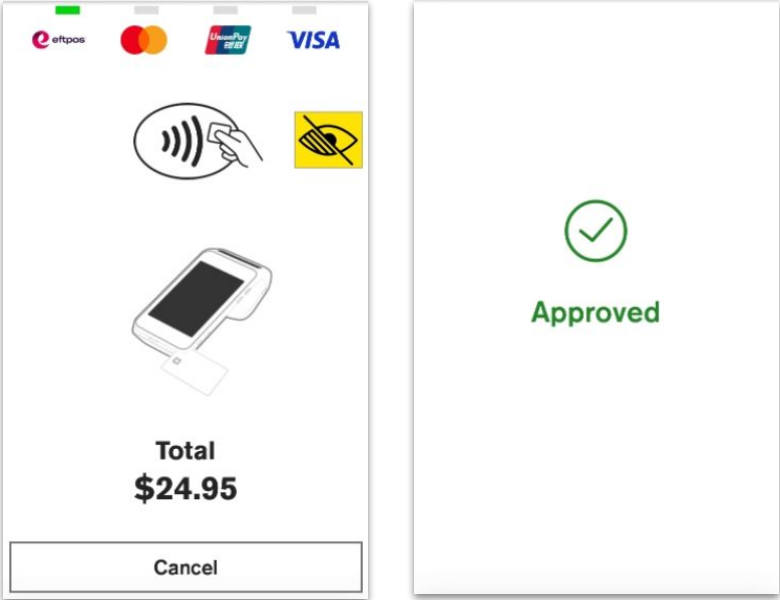
To perform a test [Purchase Transaction](#) to ensure that the integrated solution is working:

1. Select the [Product](#)
2. Select [EFTPOS](#)

## Example Screens



# Perform a Test Purchase Transaction - (2 of 2)

Steps	Example Screens
<p>3. Complete payment on the EFTPOS terminal</p>	

# Perform a Test Refund Transaction - (1 of 2)

## Steps

To Refund the test purchase transaction:

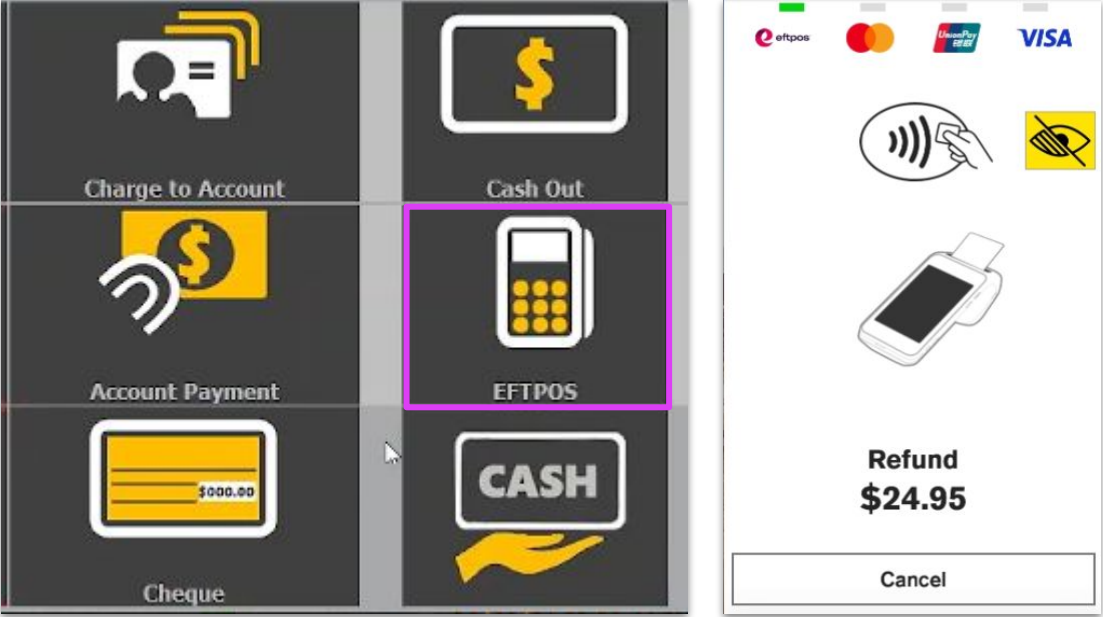
1. Select **Return**
2. Select the item
3. Select **Subtotal**

## Example Screens

The screenshot displays a POS system interface with the following elements:

- Header:** Shows "Open Purchase" with a "2nd price" button, "Void Returns Receipt Off" status, and "Customer name" field. The "Sub Total" is displayed as **\$24.95**.
- Transaction Details:** Date and time: 20/08/2021 03:39pm, Friday. Transaction type: RETURN. Item: COCA COLA 375ML 30PK. Price: -1 @ \$24.95. Subtotal: **\$-24.95**.
- Function Grid:** A grid of buttons for transaction actions. The "Return" button is highlighted with a pink border. Other buttons include Price Override, Cancel, Reprint, Void, Error Correct, Receipt, 2nd Price, Recall, and Account #.
- Keypad:** A numeric keypad with buttons for digits 0-9, a "Lock" button, "Clear", "QTY", and "Enter".
- Product Grid:** A grid of product images and names. The "Sub Total" button in the bottom-left corner is highlighted with a pink border. Products shown include Coca Cola 30pk, Milk, Oranges, Red Seedless, BBQ Chicken, Smokes, Francelle 24pk, Pepsi Max 24pk, and Cavendish.

# Perform a Test Refund Transaction - (2 of 2)

Steps	Example Screens
4. Select EFTPOS	 <p>The image displays three sequential screens from a payment terminal interface. The first screen on the left is a menu with three options: 'Charge to Account' (with a card icon), 'Account Payment' (with a card and dollar sign icon), and 'Cheque' (with a card icon). The second screen in the middle is a 2x2 grid of options: 'Cash Out' (with a dollar sign icon), 'EFTPOS' (with a terminal icon and highlighted by a purple border), and 'CASH' (with a hand icon). The third screen on the right shows logos for 'eftpos', Mastercard, UnionPay, and VISA. Below the logos are icons for contactless payment and QR code. A terminal image is shown below. The screen displays 'Refund \$24.95' and a 'Cancel' button at the bottom.</p>