

Volgai (POSApt) Android POS

# Pairing and Transaction User Guide

Updated on, by: 23 Jan, JH

Reviewed on, by: 24 Jan, TB

mx51



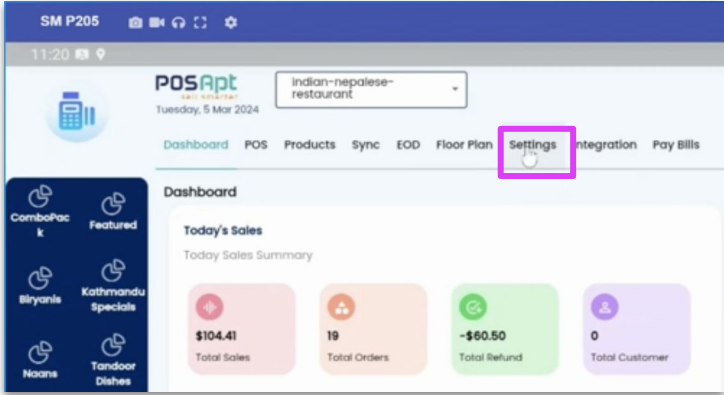
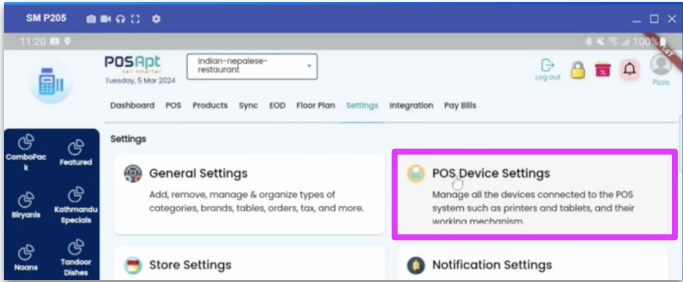
# Table of Contents

- System Requirements
- Pairing the Point-of-Sale (POS) to the EFTPOS Terminal
- Perform a test Purchase Transaction
- Perform a test Refund Transaction

# System Requirements

Systems	Requirements
Connectivity	Both the Point-of-sale (POS) system and EFTPOS Terminal need to be connected to the <a href="#">same Local Area Network</a>
POS Version	<a href="#">1.0 and above</a>
POS Operating System	<a href="#">Android</a>
Integration Type	<a href="#">SPI</a>

# Pairing the POS to the EFTPOS Terminal - *POS configuration* (1 of 3)

Steps	Example Screens
<ol style="list-style-type: none"><li>1. Login to <b>Volgai POS</b></li><li>2. Select <b>Settings</b></li></ol>	 <p>The screenshot shows the POS Apt dashboard for 'Indian-nepalese-restaurant' on Tuesday, 5 Mar 2024. The 'Settings' menu item in the top navigation bar is highlighted with a pink box. The dashboard includes a sidebar with menu categories like ComboPac, Biryani, Naans, Featured, Kathmandu Specials, and Tandoor Dishes. The main content area displays 'Today's Sales' with a summary of Total Sales (\$104.41), Total Orders (19), Total Refund (-\$60.50), and Total Customer (0).</p>
<ol style="list-style-type: none"><li>3. Select <b>POS Device Settings</b></li></ol>	 <p>The screenshot shows the 'Settings' page in the POS Apt application. The 'POS Device Settings' option is highlighted with a pink box. The page includes sections for 'General Settings' (to manage categories, brands, tables, orders, tax, etc.), 'Store Settings', and 'Notification Settings'. The 'POS Device Settings' description reads: 'Manage all the devices connected to the POS system such as printers and tablets, and their working mechanism.'</p>

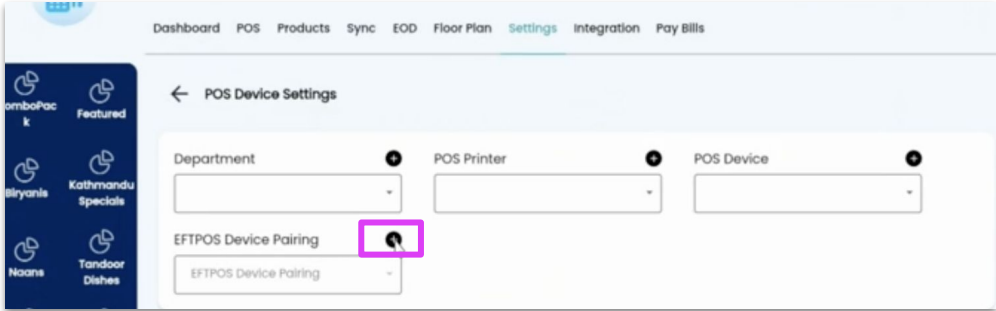
Volgai screen

# Pairing the POS to the EFTPOS Terminal - POS configuration (2 of 3)

## Steps

4. Select + next to EFTPOS Device Pairing

## Example Screens



Volgai screen

# Pairing the POS to the EFTPOS Terminal - *POS configuration (3 of 3)*

## Steps

5. Select **Payment Provider** from the dropdown list.
6. Select **Auto Address** under **Configuration Option**
7. Enter the **Serial Number** and **POS ID**
8. Select **Pair**

## Example Screens

POS Apt  
Tuesday, 5 Mar 2024  
indian-nepalese-restaurant

Dashboard POS Products Sync EOD Floor Plan Settings Integration Pay Bills

← EFTPOS Pairing View Console Logs

Pairing configuration Details

\* Payment Provider (Other) Please specify  
Gecko Demo Bank gko

Configuration Option EFTPOS address  
Auto Address

\* Serial Number  
123-123-123

\* POS ID  
d

Pairing status  
Unpaired  
Merchant ID  
Terminal ID  
Battery

Volgai screen

# Pairing the POS to the EFTPOS Terminal - *EFTPOS Terminal* (1 of 2)

## Steps

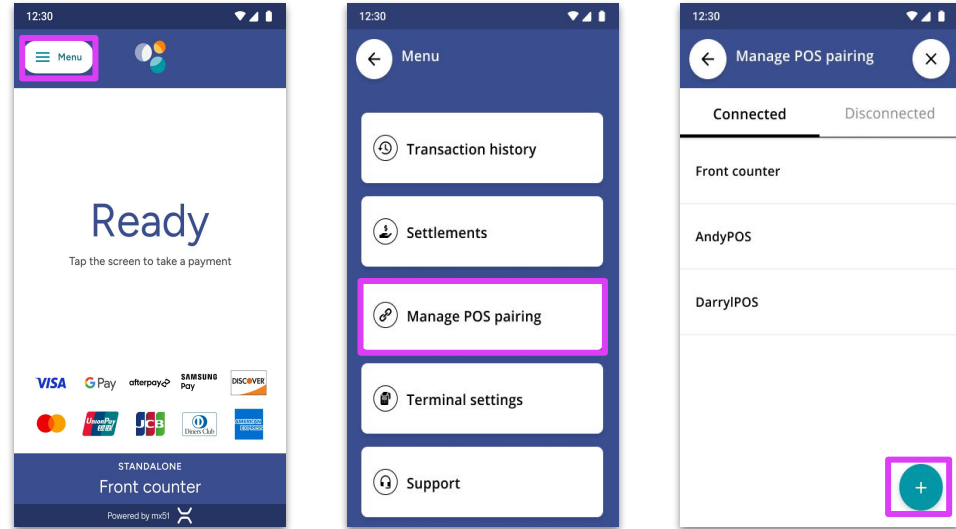
1. On the EFTPOS terminal, Select Menu

*Note: If there is no existing pairing, the "Manage POS pairing" button will show*

2. Select Manage POS pairing

3. Select +

## Example Screens



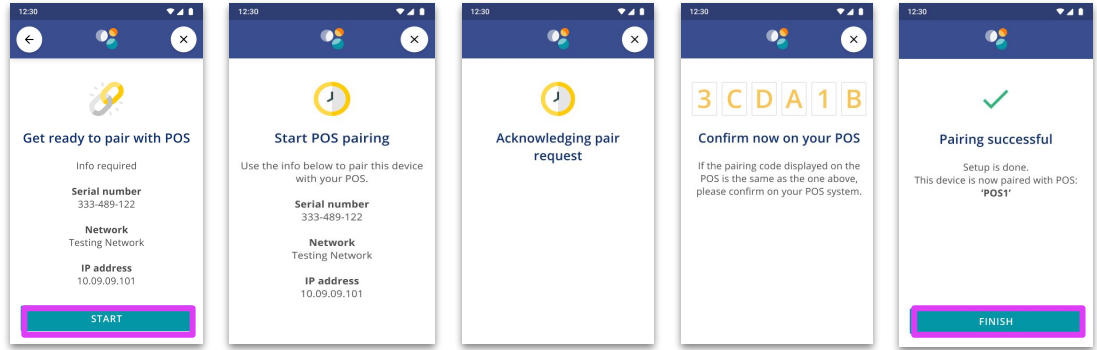
EFTPOS Terminal screens

# Pairing the POS to the EFTPOS Terminal - *EFTPOS Terminal* (2 of 2)

## Steps

4. On the **EFTPOS Terminal**:
  - Select **START**
  - Ensure the code displayed matches what is displayed on POS and select **YES**
  - Select **FINISH**

## Example Screens



*EFTPOS Terminal* screens

# Perform a Test Purchase Transaction - (1 of 2)

## Steps

To perform a test [Purchase Transaction](#) to ensure that the integrated solution is working;

1. Select the [Product](#)
2. Select [Place an Order](#)

## Example Screens

Make Payment

Full Amount Split Amount Split By ...

Loyalty Gift Cards Cash EFTPOS

Items Price

Make Me Blush(Petite) \$65.00

Voucher Redeem Code

Search Customers

EFTPOS

Paid Amount 65 Tip Amount 0

Public Holiday Surcharge \$0.00

Credit Card Surcharge(%) 2 % \$0.00

Total Payable Amount \$65.00

Write Comments Here

Print Receipt Pay Now

Billing

Delivery 0.00

Discount 0 \$0.00

Tax included in Total: \$5.91

Grand Total: \$65.00

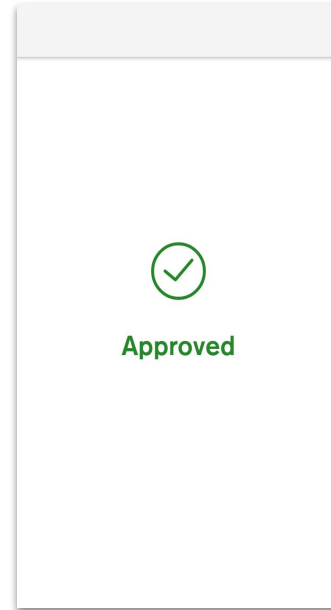
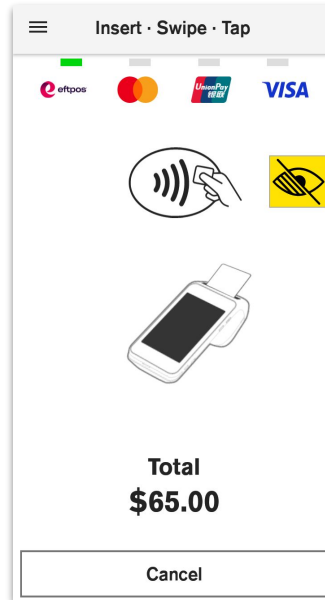
Volgai screen

# Perform a Test Purchase Transaction - (2 of 2)

## Steps

3. Select **Pay Now**. The transaction will be sent to the eftpos terminal for payment.

## Example Screens



*EFTPOS Terminal screens*

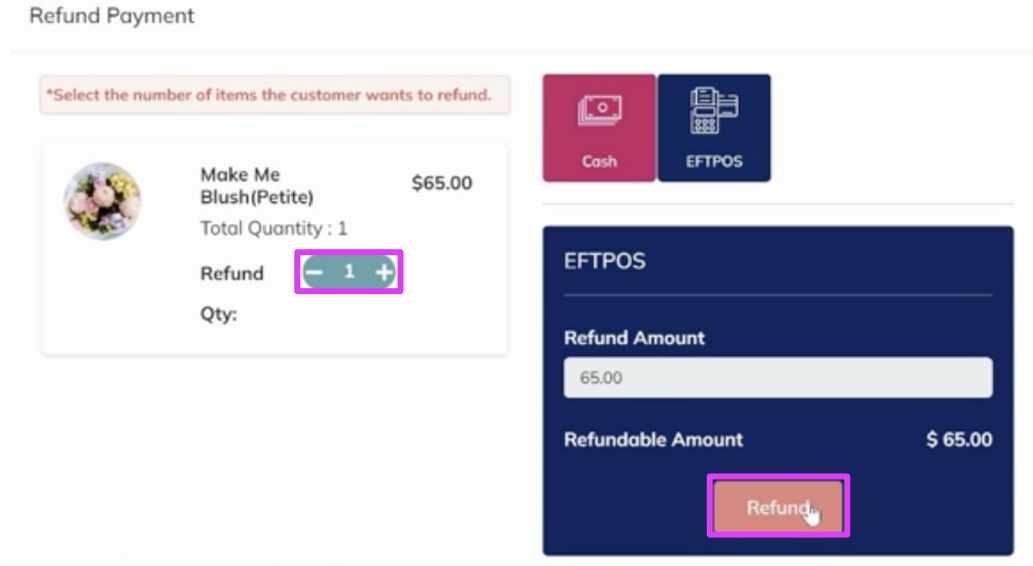
# Perform a Test Refund Transaction - (1 of 2)

## Steps

To [Refund](#) the test purchase transaction:

1. Select [Orders](#)
2. Select the [Transaction](#) to be refunded followed by [Refund](#)
3. Change the [Quantity](#) of the product to be refunded
4. Select [Refund](#). The transaction will be sent to the eftpos terminal for payment.

## Example Screens



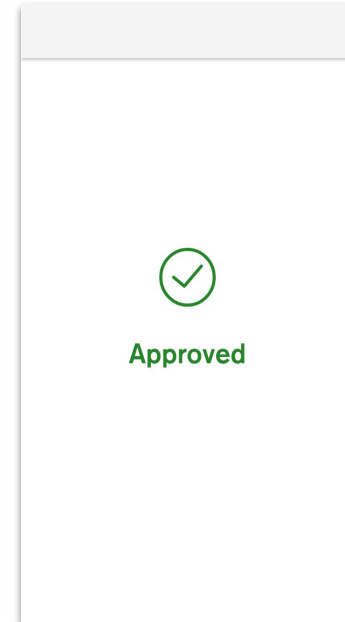
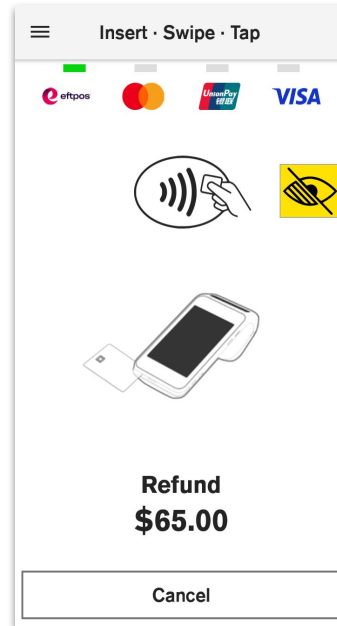
*Volgai screen*

# Perform a Test Refund Transaction - (2 of 2)

## Steps

5. On the eftpos terminal, enter the **manager passcode**

## Example Screens



EFTPOS Terminal screens